

SOUTHWEST INFORMATION OFFICE
Dallas, Texas

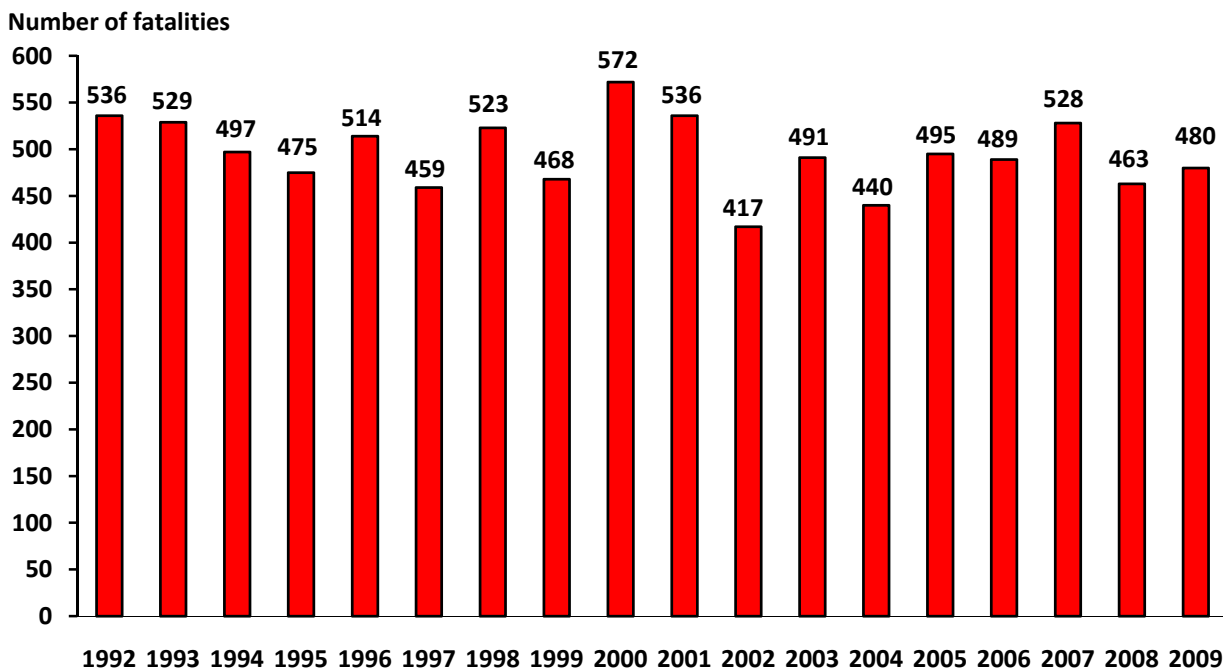
For release Thursday, September 2, 2010

Contact Information: (972) 850-4800 • BLSInfoDallas@bls.gov • www.bls.gov/ro6

TEXAS WORKPLACE FATALITIES IN 2009
Fatal Work Injuries Rise

There were 480 fatal work injuries recorded in Texas during 2009, an increase of 17 cases from 2008, the U.S. Bureau of Labor Statistics reported today. Regional Commissioner Stanley W. Suchman noted that while these results are preliminary, the 2009 count was well below the series high of 572 recorded in 2000. (See chart 1.) Final 2009 national and State results will be released in April 2011.

Chart 1. Total work-related fatalities in Texas by year, 1992-2009



Note: Totals for 2009 are preliminary.

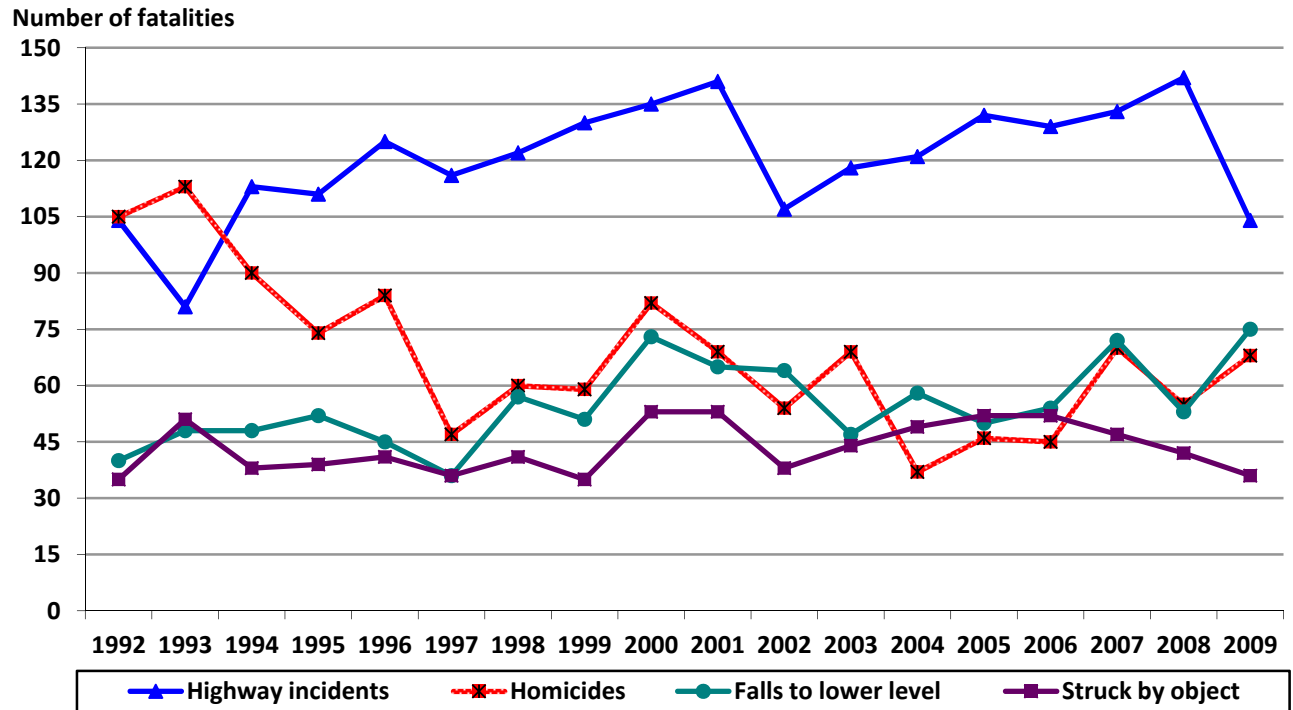
The most frequent events leading to workplace fatalities in Texas in 2009 were highway incidents (104), falls to a lower level (75), homicides (68), and being struck by an object or equipment (36). (See chart 2.) Combined, these four events¹ accounted for 59 percent of all work-related fatalities in the State.

¹ Fatal events are categorized into several major groupings including transportation incidents, assaults and violent acts, and falls, among others. These major groups are further broken down into more detailed groups. See the Occupational Injury and Illness Classification System (OIICS) Manual at www.bls.gov/iif/oshoiccs.htm for detailed information on the categories of fatalities used in this census.

Highway incidents remained the most frequent fatal workplace event for both the State and the nation in 2009. While highway incidents have led all other fatal events in Texas since 1994, this year's total was the lowest since 1993. The 104 fatal injuries resulting from highway incidents were down from the 142 recorded in 2008. Highway incidents accounted for 22 percent of the State's workplace fatalities in 2009; nationally, this event accounted for 20 percent of work-related deaths. (See tables A and B.)

Occupational fatalities resulting from falls to a lower level accounted for 75 deaths in 2009, up from 53 in 2008. Falls to a lower level represented 16 percent of all workplace fatalities in the State compared to 12 percent nationwide.

Chart 2. The four most frequent work-related fatal events in Texas, 1992-2009



Note: Totals for 2009 are preliminary.

Work-related homicides in Texas accounted for 68 fatalities in 2009, an increase of 13 from the previous year. This year's total includes the 13 victims of the November shooting at Fort Hood. Although work-related homicides have generally trended upward since 2004, the 2009 level was notably below the peak of 113 reached in 1993. Work-related homicides accounted for 14 percent of on-the-job deaths statewide and 12 percent nationally.

Thirty-six fatalities in Texas resulted from workers being struck by an object or equipment in 2009, the lowest level since 1999 when 35 such deaths were recorded. This type of fatal work injury accounted for 8 percent of on-the-job fatalities in the State and 10 percent in the nation.

Four other events each accounted for 4 percent or more of all workplace fatalities in Texas. These included contact with electric current (26 deaths), self-inflicted injuries (23), non-highway incident, except rail, air, and water (22), and pedestrian being struck by a vehicle or mobile equipment (22). (See table 1.) The 23 work-related fatalities resulting from self-inflicted injuries was the second-highest number in the history of the Fatality Census, the peak for such events having reached 26 in 2001.

Table A. Fatal occupational injuries in Texas by selected event, 1992-2009

Year	Total fatalities	Highway incidents		Falls to lower level		Homicides		Struck by object or equipment	
		Number	Percent	Number	Percent	Number	Percent	Number	Percent
1992	536	104	19	40	7	105	20	35	7
1993	529	81	15	48	9	113	21	51	10
1994	497	113	23	48	10	90	18	38	8
1995	475	111	23	52	11	74	16	39	8
1996	514	125	24	45	9	84	16	41	8
1997	459	116	25	36	8	47	10	36	8
1998	523	122	23	57	11	60	11	41	8
1999	468	130	28	51	11	59	13	35	7
2000	572	135	24	73	13	82	14	53	9
2001	536	141	26	65	12	69	13	53	10
2002	417	107	26	64	15	54	13	38	9
2003	491	118	24	47	10	69	14	44	9
2004	440	121	28	58	13	37	8	49	11
2005	495	132	27	50	10	46	9	52	11
2006	489	129	26	54	11	45	9	52	11
2007	528	133	25	72	14	70	13	47	9
2008 ¹	463	142	31	53	11	55	12	42	9
2009 ²	480	104	22	75	16	68	14	36	8

¹ Since the initial release of 2008 data, 6 additional job-related fatalities were identified in Texas bringing the 2008 total job-related fatality count to 463.

² Totals for 2009 are preliminary.

Key characteristics of fatal work injuries in Texas:

— Men accounted for 95 percent (455) of the work-related fatalities in Texas in 2009. Transportation incidents, which include highway, nonhighway, pedestrian, air, water, rail fatalities, and fatalities resulting from being struck by a vehicle, accounted for 33 percent of deaths among male workers. Assaults and violent acts made up 18 percent of male work-related fatalities. Twenty-five women were fatally injured on-the-job in Texas, 44 percent as a result of transportation incidents and 36 percent due to assaults and violent acts. (See table 2.)

— Fifty percent of those who died from a workplace injury in Texas were white, non-Hispanic (238); 39 percent were Hispanic or Latino (185); 9 percent were black, non-Hispanic (43); and 3 percent were Asian (13). (Some worker fatalities were not identified by race or ethnic origin.) The most frequent cause of death was transportation incidents for both white and black non-Hispanic workers. Among Hispanic workers, the leading cause of work-related fatalities was falls. For Asian workers, the primary cause of work-related deaths was assaults and violent acts, which accounted for 8 of the 13 total fatalities. (See table 2.)

— Workers 25-54 years old – the prime working age group – made up nearly two-thirds (313) of the State’s on-the-job fatalities in 2009. (See table 2.)

— Seventy-seven percent of workers killed on-the-job worked for wages and salaries and the remaining 23 percent were self-employed. (See table 2.)

— Two industry sectors accounted for 45 percent of workplace fatalities in the State—construction (138) and transportation and warehousing (76). In the construction industry, falls were responsible for 40 percent of fatal injuries, followed by exposure to harmful substances or environments at 22 percent. In the transportation and warehousing industry, transportation incidents were the most prevalent cause of workplace deaths, accounting for nearly three-fourths of all fatal injuries. (See table 3.)

— From an occupational perspective, construction and extraction jobs had the highest number of workplace fatalities (133), followed by transportation and material moving jobs (115). Combined, these two occupational groups accounted for more than one-half of all fatal work injuries in Texas. The most frequent cause of on-the-job fatalities among construction and extraction workers was falls, while transportation incidents led among transportation and material moving occupations. (See table 4.)

U.S. Workplace Fatalities

Nationwide, 4,340 fatal work injuries were reported in 2009, a decrease of 17 percent from the revised total of 5,214 recorded in 2008. While the 2009 results are preliminary, this figure represents the smallest annual total since the Census of Fatal Occupational Injuries (CFOI) program was first conducted in 1992. (See table B.) Economic factors played a major role in the national fatal work injury decrease as total hours worked declined during the year. Similarly, some industries that historically have accounted for a significant share of fatal work injuries, such as construction, experienced even larger declines in employment or hours worked.

Table B. Fatal occupational injuries in the United States by selected event, 1992-2009

Year	Total fatalities	Highway incidents		Falls to lower level		Homicides		Struck by object or equipment	
		Number	Percent	Number	Percent	Number	Percent	Number	Percent
1992	6,217	1,158	19	507	8	1,044	17	557	9
1993	6,331	1,242	20	534	8	1,074	17	565	9
1994	6,632	1,343	20	580	9	1,080	16	591	9
1995	6,275	1,346	21	578	9	1,036	17	547	9
1996	6,202	1,346	22	610	10	927	15	582	9
1997	6,238	1,393	22	653	10	860	14	579	9
1998	6,055	1,442	24	625	10	714	12	520	9
1999	6,054	1,496	25	634	10	651	11	585	10
2000	5,920	1,365	23	659	11	677	11	571	10
2001 ¹	5,915	1,409	24	700	12	643	11	553	9
2002	5,534	1,373	25	638	12	609	11	505	9
2003	5,575	1,353	24	604	11	632	11	531	10
2004	5,764	1,398	24	738	13	559	10	602	10
2005	5,734	1,437	25	664	12	567	10	607	11
2006	5,840	1,356	23	738	13	540	9	589	10
2007	5,657	1,414	25	746	13	628	11	504	9
2008 ²	5,214	1,215	23	593	11	526	10	520	10
2009 ³	4,340	882	20	518	12	521	12	414	10

¹ Totals for 2001 exclude fatalities due to the September 11, 2001 terrorist attacks.

² Totals for 2008 are revised and final. The BLS national news release issued August 20, 2009, reported a total of 5,071 fatal work injuries for calendar year 2008. Since then, an additional 143 job-related fatalities were identified bringing the total job-related fatality count for 2008 to 5,214.

³ Data for 2009 are preliminary. Revised and final 2009 data are scheduled to be released in April 2011.

Highway incidents in 2009 continued to lead all other events in the frequency of on-the-job fatalities, a position held since the program's inception in 1992. Still, the 2009 count of 882 fatal injuries from highway incidents was down 27 percent from the 2008 count of 1,215 fatal injuries.

Workplace homicides (521) declined 1 percent in 2009. Workplace suicides (237) were down 10 percent nationwide in 2009 from the series high of 263 in 2008. However, the 2009 preliminary count of workplace suicides is the second highest annual total reported by the fatality census.

Thirty-seven states reported lower numbers of fatal work injuries in 2009 than in 2008, while 13 states and the District of Columbia reported higher numbers.

Additional Census of Fatal Occupational Injuries data are available on the BLS Website at www.bls.gov/opub/hom/pdf/homch9.pdf. Selected current and historical information is available in PDF format. Detailed data may be accessed from the query system at data.bls.gov/PDQ/outside.jsp?survey=fi or via an extensive collection of flat text files. For further information on the Census of Fatal Occupational Injuries, contact the Southwest Economic Analysis and Information Office at 972-850-8500 from 8:00 a.m. to 11:00 a.m. and 1:00 p.m. to 4:00 p.m. (CT).

Technical Note

Background of the program

The Census of Fatal Occupational Injuries (CFOI), part of the BLS occupational safety and health statistics program, compiles a count of all fatal work injuries occurring in the U.S. in each calendar year. The program uses diverse State, federal, and independent data sources to identify, verify, and describe fatal work injuries. This assures counts are as complete and accurate as possible.

For technical information about the CFOI program, please go to the BLS Handbook of Methods on the BLS web site at www.bls.gov/opub/hom/pdf/homch9.pdf. The technical information and definitions for the CFOI Program are in Chapter 9, Part III of the BLS Handbook of Methods.

Federal/State agency coverage

The Census of Fatal Occupational Injuries includes data for all fatal work injuries, whether the decedent was working in a job covered by the Occupational Safety and Health Administration (OSHA) or other federal or State agencies or was outside the scope of regulatory coverage. Thus, any comparison between the BLS fatality census counts and those released by other agencies should take into account the different coverage requirements and definitions being used by each agency.

Several Federal and State agencies have jurisdiction over workplace safety and health. OSHA and affiliated agencies in States with approved safety programs cover the largest portion of the nation's workers. However, injuries and illnesses occurring in certain industries or activities, such as coal, metal, and nonmetal mining and highway, water, rail, and air transportation, are excluded from OSHA coverage because they are covered by other federal agencies, such as the Mine Safety and Health Administration and various agencies within the Department of Transportation.

Acknowledgments

BLS thanks the Texas Department of Labor's Division of Workers' Compensation for their efforts in collecting accurate, comprehensive, and useful data on fatal work injuries. BLS also appreciates the efforts of all Federal, State, local, and private sector entities that submitted source documents used to identify fatal work injuries. Among these agencies are the Occupational Safety and Health Administration; the National Transportation Safety Board; the U.S. Coast Guard; the Mine Safety and Health Administration; the Employment Standards Administration (Federal Employees' Compensation and Longshore and Harbor Workers' divisions); the Federal Railroad Administration; the Department of Energy; State vital statistics registrars, coroners, and medical examiners; State departments of health, labor and industries, and workers' compensation agencies; State and local police departments; and State farm bureaus.

Table 1. Fatal occupational injuries by event or exposure for all fatalities and major private industry¹ sector, Texas, 2009

Event or exposure ²	Total fatalities (number)	Goods producing				Service providing							
		Total goods producing	Natural resources and mining ³	Construction	Manufacturing	Total service providing	Trade, transportation, and utilities	Information	Financial activities	Professional & business services	Education & health services	Leisure and hospitality	Other services
Total.....	480	216	49	138	29	209	118	--	11	42	5	19	13
Contact with objects and equipment.....	65	40	11	19	10	22	12	--	--	7	--	--	--
Struck by object or equipment.....	36	18	5	9	4	17	8	--	--	6	--	--	--
Struck by falling object or equipment.....	25	13	5	6	--	12	7	--	--	4	--	--	--
Struck by flying object.....	4	--	--	--	--	--	--	--	--	--	--	--	--
Struck by dislodged flying object, particle.....	3	--	--	--	--	--	--	--	--	--	--	--	--
Struck by rolling, sliding objects or equipment on floor or ground level.....	4	--	--	--	--	--	--	--	--	--	--	--	--
Caught in or compressed by equipment or objects.....	18	13	4	4	5	3	3	--	--	--	--	--	--
Caught in running equipment or machinery.....	11	9	4	--	4	--	--	--	--	--	--	--	--
Compressed or pinched by rolling, sliding, or shifting objects.....	5	3	--	--	--	--	--	--	--	--	--	--	--
Caught in or crushed in collapsing materials.....	11	9	--	6	--	--	--	--	--	--	--	--	--
Excavation or trenching cave-in.....	3	--	--	--	--	--	--	--	--	--	--	--	--
Caught in or crushed in collapsing structure.....	7	7	--	5	--	--	--	--	--	--	--	--	--
Falls.....	82	60	--	55	3	15	4	--	--	10	--	--	--
Fall to lower level.....	75	58	--	53	3	13	3	--	--	10	--	--	--
Fall from floor, dock, or ground level.....	3	3	--	--	--	--	--	--	--	--	--	--	--
Fall from ladder.....	24	16	--	13	--	8	3	--	--	5	--	--	--
Fall from roof.....	21	21	--	21	--	--	--	--	--	--	--	--	--
Fall from roof, unspecified.....	3	3	--	3	--	--	--	--	--	--	--	--	--
Fall through skylight.....	6	6	--	6	--	--	--	--	--	--	--	--	--
Fall from roof edge.....	8	8	--	8	--	--	--	--	--	--	--	--	--
Fall from scaffold, staging.....	9	9	--	9	--	--	--	--	--	--	--	--	--
Fall from building girders or other structural steel.....	4	4	--	3	--	--	--	--	--	--	--	--	--
Fall from nonmoving vehicle.....	4	--	--	--	--	--	--	--	--	--	--	--	--
Fall to lower level, n.e.c.....	10	3	--	3	--	5	--	--	--	5	--	--	--
Fall on same level.....	7	--	--	--	--	--	--	--	--	--	--	--	--
Fall to floor, walkway, or other surface.....	4	--	--	--	--	--	--	--	--	--	--	--	--
Exposure to harmful substances or environments.....	61	39	6	31	--	17	6	--	--	6	--	--	3
Contact with electric current.....	26	20	3	17	--	5	3	--	--	--	--	--	--
Contact with electric current of machine, tool, appliance, or light fixture.....	7	4	--	4	--	3	--	--	--	--	--	--	--
Contact with wiring, transformers, or other electrical components.....	13	10	--	8	--	--	--	--	--	--	--	--	--
Contact with overhead power lines.....	5	5	--	4	--	--	--	--	--	--	--	--	--
Contact with temperature extremes.....	10	6	--	5	--	3	--	--	--	3	--	--	--
Exposure to environmental heat.....	9	5	--	5	--	3	--	--	--	3	--	--	--
Exposure to caustic, noxious, or allergenic substances.....	12	5	--	3	--	7	--	--	--	--	--	--	--
Inhalation of substance.....	6	4	--	3	--	--	--	--	--	--	--	--	--
Inhalation in open or nonconfined space.....	5	3	--	--	--	--	--	--	--	--	--	--	--
Injections, stings, venomous bites.....	6	--	--	--	--	5	--	--	--	--	--	--	--
Injections, stings, venomous bites, n.e.c.....	4	--	--	--	--	4	--	--	--	--	--	--	--
Oxygen deficiency, n.e.c.....	12	7	--	5	--	--	--	--	--	--	--	--	--
Drowning, submersion.....	11	6	--	4	--	--	--	--	--	--	--	--	--
Transportation accidents.....	163	57	22	26	9	90	69	--	4	13	--	--	--
Highway accident.....	104	33	13	13	7	63	48	--	--	10	--	--	--
Collision between vehicles, mobile equipment.....	52	11	7	--	--	37	26	--	--	7	--	--	--
Re-entrant collision.....	3	--	--	--	--	3	--	--	--	--	--	--	--
Moving in same direction.....	6	--	--	--	--	5	4	--	--	--	--	--	--
Moving in opposite directions, oncoming.....	27	6	5	--	--	18	12	--	--	5	--	--	--
Moving in intersection.....	6	3	--	--	--	--	--	--	--	--	--	--	--
Moving and standing vehicle, mobile equipment--in roadway.....	5	--	--	--	--	5	4	--	--	--	--	--	--
Moving and standing vehicle, mobile equipment--side of road.....	3	--	--	--	--	--	--	--	--	--	--	--	--
Vehicle struck object in roadway.....	3	--	--	--	--	--	--	--	--	--	--	--	--
Vehicle struck object on side of road.....	20	3	--	--	--	16	13	--	--	--	--	--	--
Noncollision accident.....	29	18	5	9	4	9	8	--	--	--	--	--	--
Jack-knifed or overturned--no collision.....	25	16	4	8	4	8	7	--	--	--	--	--	--
Noncollision accident, n.e.c.....	3	--	--	--	--	--	--	--	--	--	--	--	--
Nonhighway accident, except rail, air, water.....	22	14	6	6	--	7	5	--	--	--	--	--	--
Noncollision accident.....	19	12	6	6	--	6	4	--	--	--	--	--	--
Fell from and struck by vehicle, mobile equipment.....	7	5	--	3	--	--	--	--	--	--	--	--	--
Overturned.....	8	5	3	--	--	--	--	--	--	--	--	--	--
Noncollision accident, n.e.c.....	3	--	--	--	--	--	--	--	--	--	--	--	--
Pedestrian, nonpassenger struck by vehicle, mobile equipment.....	22	6	--	5	--	13	10	--	--	--	--	--	--
Pedestrian struck by vehicle, mobile equipment in roadway.....	7	3	--	3	--	--	--	--	--	--	--	--	--
Pedestrian struck by vehicle, mobile equipment on side of road.....	4	--	--	--	--	3	3	--	--	--	--	--	--
Pedestrian struck by vehicle, mobile equipment in parking lot or non-roadway area.....	11	--	--	--	--	8	5	--	--	--	--	--	--
Water vehicle accident.....	7	3	--	--	--	4	3	--	--	--	--	--	--
Fall from ship, boat, n.e.c.....	4	3	--	--	--	--	--	--	--	--	--	--	--
Aircraft accident.....	6	--	--	--	--	--	--	--	--	--	--	--	--
During takeoff or landing.....	4	--	--	--	--	--	--	--	--	--	--	--	--
Fires and explosions.....	15	7	4	--	--	5	--	--	--	--	--	--	3
Fire--unintended or uncontrolled.....	7	3	--	--	--	--	--	--	--	--	--	--	--
Fire in residence, building, or other structure.....	4	--	--	--	--	--	--	--	--	--	--	--	--
Fire, n.e.c.....	3	--	--	--	--	--	--	--	--	--	--	--	--
Explosion.....	8	4	--	--	--	4	--	--	--	--	--	--	3
Explosion of pressure vessel or piping.....	6	3	--	--	--	3	--	--	--	--	--	--	--
Assaults and violent acts.....	93	13	4	6	3	59	26	--	7	4	--	18	4
Assaults and violent acts by person(s).....	68	5	--	--	--	43	19	--	4	--	--	16	--
Shooting.....	56	4	--	--	--	35	15	--	3	--	--	13	--
Stabbing.....	4	--	--	--	--	3	--	--	--	--	--	--	--
Assaults and violent acts by person(s), n.e.c.....	7	--	--	--	--	4	--	--	--	--	--	--	--
Self-inflicted injury.....	23	7	--	4	--	15	7	--	3	--	--	--	--
Suicide, attempted suicide.....	23	7	--	4	--	15	7	--	3	--	--	--	--

¹ Industry data from 2003 to 2008 are classified using the 2002 North American Industry Classification System (NAICS). Industry data after 2008 are classified using the 2007 NAICS.
² Based on the BLS Occupational Injury and Illness Classification Manual.
³ Includes fatalities at all establishments categorized as Mining (Sector 21) in the North American Industry Classification System, including establishments not governed by the Mine Safety and Health Administration (MSHA) rules and reporting, such as those in Oil and Gas Extraction.

NOTE: Totals for major categories may include subcategories not shown separately. Dashes indicate no data reported or data that do not meet publication criteria. n.e.c. means "not elsewhere classified." CFOI fatality counts exclude illness-related deaths unless precipitated by an injury event. Data for 2009 are preliminary.
 SOURCE: U.S. Bureau of Labor Statistics, in cooperation with State and Federal agencies, Census of Fatal Occupational Injuries.

Table 2. Fatal occupational injuries by worker characteristics and event or exposure, Texas, 2009

Worker characteristics	Total fatalities (number)	Event or exposure ¹					
		Transportation incidents ²	Assaults and violent acts ³	Contact with objects and equipment	Falls	Exposure to harmful substances or environments	Fires and explosions
Total.....	480	163	93	65	82	61	15
Employee Status							
Wage and Salary Workers ⁴	369	137	69	57	50	42	13
Self-employed ⁵	111	26	24	8	32	19	--
Gender							
Men.....	455	152	84	65	77	61	15
Women.....	25	11	9	--	5	--	--
Age							
Under 16 years.....	--	--	--	--	--	--	--
16 to 17 years.....	--	--	--	--	--	--	--
18 to 19 years.....	7	--	--	--	--	--	--
20 to 24 years.....	39	6	6	8	10	7	--
25 to 34 years.....	89	23	22	10	16	17	--
35 to 44 years.....	108	41	19	14	16	13	4
45 to 54 years.....	116	30	24	20	19	17	6
55 to 64 years.....	83	42	15	10	10	5	--
65 years and over.....	37	18	5	--	10	--	--
Race or Ethnic Origin⁶							
White, non-Hispanic.....	238	95	48	26	29	31	9
Black, non-Hispanic.....	43	20	12	3	4	3	--
Hispanic or Latino.....	185	46	24	34	49	26	5
American Indian or Alaska Native.....	--	--	--	--	--	--	--
Asian.....	13	--	8	--	--	--	--
Native Hawaiian or Pacific Islander.....	--	--	--	--	--	--	--

¹ Based on the BLS Occupational Injury and Illness Classification Manual.

² Includes highway, nonhighway, air, water, rail fatalities, and fatalities resulting from being struck by a vehicle.

³ Includes violence by persons, self-inflicted injury, and attacks by animals.

⁴ May include volunteers and workers receiving other types of compensation.

⁵ Includes self-employed workers, owners of unincorporated businesses and farms, paid and unpaid family workers, and may include some owners of incorporated businesses or members of partnerships.

⁶ Persons identified as Hispanic or Latino may be of any race. The race categories shown exclude data for Hispanics and Latinos.

NOTE: Totals for major categories may include subcategories not shown separately. Dashes indicate no data reported or data that do not meet publication criteria. CFOI fatality counts exclude illness-related deaths unless precipitated by an injury event. Data for 2009 are preliminary.

SOURCE: U.S. Bureau of Labor Statistics, in cooperation with State and Federal agencies, Census of Fatal Occupational Injuries.

Table 3. Fatal occupational injuries by industry and event or exposure, Texas, 2009

Industry ¹	NAICS code ¹	Total fatalities (number)	Event or exposure ²					
			Transportation incidents ³	Assaults and violent acts ⁴	Contact with objects and equipment	Falls	Exposure to harmful substances or environments	Fires and explosions
Total		480	163	93	65	82	61	15
Private Industry		425	147	72	62	75	56	12
Goods Producing		216	57	13	40	60	39	7
Natural Resources and Mining		49	22	4	11	--	6	4
Agriculture, Forestry, Fishing and Hunting	11	21	10	4	3	--	3	--
Crop Production.....	111	8	--	3	--	--	--	--
Other Crop Farming.....	1119	3	--	--	--	--	--	--
Animal Production.....	112	8	5	--	--	--	--	--
Cattle Ranching and Farming.....	1121	6	4	--	--	--	--	--
Beef Cattle Ranching and Farming, including Feedlots.....	11211	5	3	--	--	--	--	--
Beef Cattle Ranching and Farming.....	112111	3	--	--	--	--	--	--
Fishing, Hunting and Trapping.....	114	3	--	--	--	--	--	--
Mining ⁵	21	28	12	--	8	--	3	4
Support Activities for Mining.....	213	26	11	--	7	--	3	4
Support Activities for Mining.....	2131	26	11	--	7	--	3	4
Support Activities for Mining.....	21311	26	11	--	7	--	3	4
Drilling Oil and Gas Wells.....	213111	14	5	--	7	--	--	--
Support Activities for Oil and Gas Operations.....	213112	12	6	--	--	--	--	4
Construction		138	26	6	19	55	31	--
Construction	23	138	26	6	19	55	31	--
Construction of buildings.....	236	15	--	--	3	6	4	--
Residential Building Construction.....	2361	10	--	--	--	5	3	--
Residential Building Construction.....	23611	10	--	--	--	5	3	--
New Single-family Housing Construction (except operative builders).....	236115	4	--	--	--	--	--	--
Nonresidential Building Construction.....	2362	5	--	--	--	--	--	--
Commercial and Institutional Building Construction.....	23622	5	--	--	--	--	--	--
Heavy and Civil Engineering Construction.....	237	28	16	--	5	3	4	--
Utility System Construction.....	2371	15	7	--	--	--	4	--
Water and Sewer Line and Related Structures Construction.....	23711	7	--	--	--	--	3	--
Oil and Gas Pipeline and Related Structures Construction.....	23712	5	3	--	--	--	--	--
Power and Communication Line and Related Structures Construction.....	23713	3	--	--	--	--	--	--
Highway, Street, and Bridge Construction.....	2373	11	8	--	--	--	--	--
Highway, Street, and Bridge Construction.....	23731	11	8	--	--	--	--	--
Specialty Trade Contractors.....	238	95	10	4	11	46	23	--
Foundation, Structure, and Building Exterior Contractors.....	2381	36	--	3	3	26	3	--
Structural Steel and Precast Concrete Contractors.....	23812	5	--	--	--	4	--	--
Nonresidential Structural Steel and Precast Concrete Contractors.....	238122	4	--	--	--	4	--	--
Masonry Contractors.....	23814	3	--	--	--	--	--	--
Roofing Contractors.....	23816	21	--	--	--	18	--	--
Residential Roofing Contractors.....	238161	11	--	--	--	9	--	--
Nonresidential Roofing Contractors.....	238162	10	--	--	--	9	--	--
Building Equipment Contractors.....	2382	26	3	--	--	10	12	--
Electrical Contractors.....	23821	16	--	--	--	7	8	--
Nonresidential Electrical Contractors.....	238212	15	--	--	--	7	7	--
Plumbing, Heating, and Air-Conditioning Contractors.....	23822	9	--	--	--	3	4	--
Residential Plumbing, Heating, and Air-Conditioning Contractors.....	238221	3	--	--	--	--	3	--
Nonresidential Plumbing, Heating, and Air-Conditioning Contractors.....	238222	6	--	--	--	3	--	--
Building Finishing Contractors.....	2383	12	--	--	--	5	6	--
Drywall and Insulation Contractors.....	23831	5	--	--	--	--	3	--
Nonresidential Drywall and Insulation Contractors.....	238312	4	--	--	--	--	3	--
Painting and Wall Covering Contractors.....	23832	4	--	--	--	3	--	--
Residential Painting and Wall Covering Contractors.....	238321	3	--	--	--	--	--	--
Other Specialty Trade Contractors.....	2389	21	6	--	7	5	--	--
Site Preparation Contractors.....	23891	15	6	--	6	--	--	--
Other Nonresidential Site Preparation Contractors.....	238912	14	6	--	5	--	--	--
All Other Special Trade Contractors.....	23899	6	--	--	--	3	--	--
All Other Nonresidential Special Trade Contractors.....	238992	3	--	--	--	3	--	--
Manufacturing		29	9	3	10	3	--	--
Manufacturing	31-33	29	9	3	10	3	--	--
Fabricated Metal Product Manufacturing.....	332	8	--	--	4	--	--	--
Architectural and Structural Metals Manufacturing.....	3323	3	--	--	--	--	--	--
Machine Shops; Turned Product; and Screw, Nut, and Bolt Manufacturing.....	3327	3	--	--	--	--	--	--
Machine Shops.....	33271	3	--	--	--	--	--	--
Machinery Manufacturing.....	333	3	--	--	--	--	--	--

See footnotes at end of table.

Table 3. Fatal occupational injuries by industry and event or exposure, Texas, 2009 - continued

Industry ¹	NAICS code ¹	Total fatalities (number)	Event or exposure ²					
			Transportation incidents ³	Assaults and violent acts ⁴	Contact with objects and equipment	Falls	Exposure to harmful substances or environments	Fires and explosions
Service providing.....		209	90	59	22	15	17	5
Trade, Transportation, and Utilities.....		118	69	26	12	4	6	--
Wholesale Trade.....	42	12	7	--	3	--	--	--
Merchant Wholesalers, Durable Goods.....	423	7	3	--	--	--	--	--
Machinery, Equipment, and Supplies Merchant wholesalers.....	4238	4	3	--	--	--	--	--
Merchant Wholesalers, Nondurable Goods.....	424	5	4	--	--	--	--	--
Retail Trade.....	44-45	30	6	16	4	3	--	--
Motor Vehicle and Parts Dealers.....	441	4	--	--	--	--	--	--
Food and Beverage Stores.....	445	8	--	7	--	--	--	--
Grocery Stores.....	4451	7	--	6	--	--	--	--
Convenience Stores.....	44512	7	--	6	--	--	--	--
Gasoline Stations.....	447	3	--	--	--	--	--	--
Gasoline Stations.....	4471	3	--	--	--	--	--	--
Gasoline Stations with Convenience Stores.....	44711	3	--	--	--	--	--	--
Miscellaneous Store Retailers.....	453	3	--	--	--	--	--	--
Transportation and Warehousing.....	48-49	76	56	9	5	--	4	--
Water Transportation.....	483	3	--	--	--	--	--	--
Truck Transportation.....	484	47	40	4	--	--	--	--
General Freight Trucking.....	4841	32	27	3	--	--	--	--
General Freight Trucking, Long-Distance.....	48412	30	25	3	--	--	--	--
General Freight Trucking, Long-Distance, Truckload.....	484121	29	24	3	--	--	--	--
Specialized Freight Trucking.....	4842	15	13	--	--	--	--	--
Specialized Freight (except Used Goods) Trucking, Local.....	48422	8	7	--	--	--	--	--
Specialized Freight (except Used Goods) Trucking, Long-Distance.....	48423	6	6	--	--	--	--	--
Support Activities for Transportation.....	488	15	9	--	--	--	--	--
Support Activities for Air Transportation.....	4881	3	--	--	--	--	--	--
Airport Operations.....	48811	3	--	--	--	--	--	--
Other Airport Operations.....	488119	3	--	--	--	--	--	--
Support Activities for Water Transportation.....	4883	3	--	--	--	--	--	--
Support Activities for Road Transportation.....	4884	9	5	--	--	--	--	--
Motor Vehicle Towing.....	48841	5	--	--	--	--	--	--
Other Support Activities for Road Transportation.....	48849	4	3	--	--	--	--	--
Couriers and Messengers.....	492	3	3	--	--	--	--	--
Couriers and Express Delivery Services (Title change 2009).....	4921	3	3	--	--	--	--	--
Couriers and Express Delivery Services (Title change 2009).....	49211	3	3	--	--	--	--	--
Warehousing and Storage.....	493	4	--	--	--	--	--	--
Warehousing and Storage.....	4931	4	--	--	--	--	--	--
Financial Activities.....		11	4	7	--	--	--	--
Finance and Insurance.....	52	8	--	6	--	--	--	--
Credit Intermediation and Related Activities.....	522	6	--	5	--	--	--	--
Depository Credit Intermediation.....	5221	3	--	--	--	--	--	--
Commercial Banking.....	52211	3	--	--	--	--	--	--
Real Estate and Rental and Leasing.....	53	3	--	--	--	--	--	--
Rental and Leasing Services.....	532	3	--	--	--	--	--	--
Professional and Business Services.....		42	13	4	7	10	6	--
Professional, Scientific, and Technical Services.....	54	8	5	--	--	--	--	--
Professional, Scientific, and Technical Services.....	541	8	5	--	--	--	--	--
Administrative and Support and Waste Management and Remediation Services.....	56	34	8	--	6	10	6	--
Administrative and Support Services.....	561	29	6	--	4	10	6	--
Investigation and Security Services.....	5616	3	--	--	--	--	--	--
Investigation, Guard, and Armored Car Services.....	56161	3	--	--	--	--	--	--
Services to Buildings and Dwellings.....	5617	25	4	--	4	10	6	--
Landscaping Services.....	56173	22	3	--	4	9	6	--
Waste Management and Remediation Services.....	562	5	--	--	--	--	--	--
Education and Health Services.....		5	--	--	--	--	--	--
Health Care and Social Assistance.....	62	5	--	--	--	--	--	--
Ambulatory Health Care Services.....	621	4	--	--	--	--	--	--
Leisure and Hospitality.....		19	--	18	--	--	--	--
Arts, Entertainment, and Recreation.....	71	3	--	--	--	--	--	--

See footnotes at end of table.

Table 3. Fatal occupational injuries by industry and event or exposure, Texas, 2009 - continued

Industry ¹	NAICS code ¹	Total fatalities (number)	Event or exposure ²					
			Transportation incidents ³	Assaults and violent acts ⁴	Contact with objects and equipment	Falls	Exposure to harmful substances or environments	Fires and explosions
Accommodation and Food Services.....	72	16	--	16	--	--	--	--
Food Services and Drinking Places.....	722	15	--	15	--	--	--	--
Full-Service Restaurants.....	7221	3	--	3	--	--	--	--
Full-Service Restaurants.....	72211	3	--	3	--	--	--	--
Limited-Service Eating Places.....	7222	3	--	3	--	--	--	--
Limited-Service Eating Places.....	72221	3	--	3	--	--	--	--
Drinking Places (Alcoholic Beverages).....	7224	8	--	8	--	--	--	--
Drinking Places (Alcoholic Beverages).....	72241	8	--	8	--	--	--	--
Other Services.....	81	13	--	4	--	--	3	3
Other Services, except Public Administration.....	81	13	--	4	--	--	3	3
Repair and Maintenance.....	811	12	--	3	--	--	3	3
Automotive Repair and Maintenance.....	8111	11	--	3	--	--	3	--
Automotive Mechanical and Electrical Repair and Maintenance.....	81111	5	--	--	--	--	--	--
General Automotive Repair.....	811111	5	--	--	--	--	--	--
Other Automotive Repair and Maintenance.....	81119	4	--	--	--	--	--	--
All Other Automotive Repair and Maintenance.....	811198	4	--	--	--	--	--	--
Government⁶.....	92	55	16	21	3	7	5	--
Federal Government.....	92	19	5	13	--	--	--	--
Service providing.....	92	19	5	13	--	--	--	--
Public Administration.....	92	19	5	13	--	--	--	--
Public Administration.....	92	19	5	13	--	--	--	--
National Security and International Affairs.....	928	19	5	13	--	--	--	--
National Security and International Affairs.....	9281	19	5	13	--	--	--	--
National Security.....	92811	19	5	13	--	--	--	--
State Government.....	92	7	3	--	--	3	--	--
Service providing.....	92	5	--	--	--	3	--	--
Public Administration.....	92	4	--	--	--	--	--	--
Public Administration.....	92	4	--	--	--	--	--	--
Justice, Public Order, and Safety Activities.....	922	3	--	--	--	--	--	--
Justice, Public Order, and Safety Activities.....	9221	3	--	--	--	--	--	--
Correctional Institutions.....	92214	3	--	--	--	--	--	--
Local Government.....	92	29	8	7	3	4	4	--
Service providing.....	92	28	8	7	--	4	4	--
Trade, Transportation, and Utilities.....	92	3	--	--	--	--	--	--
Education and Health Services.....	92	10	5	--	--	--	--	--
Educational Services.....	92	9	4	--	--	--	--	--
Educational Services.....	611	9	4	--	--	--	--	--
Elementary and Secondary Schools.....	6111	8	4	--	--	--	--	--
Elementary and Secondary Schools.....	61111	8	4	--	--	--	--	--
Public Administration.....	92	14	--	6	--	--	--	--
Public Administration.....	92	14	--	6	--	--	--	--
Justice, Public Order, and Safety Activities.....	922	13	--	6	--	--	--	--
Justice, Public Order, and Safety Activities.....	9221	13	--	6	--	--	--	--
Police Protection.....	92212	8	--	6	--	--	--	--
Fire Protection.....	92216	5	--	--	--	--	--	--

¹ Industry data from 2003 to 2008 are classified using the 2002 North American Industry Classification System (NAICS). Industry data after 2008 are classified using the 2007 NAICS.

² Based on the BLS Occupational Injury and Illness Classification Manual.

³ Includes highway, nonhighway, air, water, rail fatalities, and fatalities resulting from being struck by a vehicle.

⁴ Includes violence by persons, self-inflicted injury, and attacks by animals.

⁵ Includes fatalities at all establishments categorized as Mining (Sector 21) in the North American Industry Classification System, including establishments not governed by the Mine Safety & Health Administration rules and reporting, such as those in Oil and Gas Extraction.

⁶ Includes fatalities to workers employed by governmental organizations regardless of industry.

NOTE: Totals for major categories may include subcategories not shown separately. Dashes indicate no data reported or data that do not meet publication criteria. CFOI fatality counts exclude illness-related deaths unless precipitated by an injury event. Data for 2009 are preliminary.

SOURCE: U.S. Bureau of Labor Statistics, in cooperation with State and Federal agencies, Census of Fatal Occupational Injuries.

Table 4. Fatal occupational injuries by occupation and event or exposure, Texas, 2009

Occupation ¹	Total fatalities (number)	Event or exposure ²					
		Transportation incidents ³	Assaults and violent acts ⁴	Contact with objects and equipment	Falls	Exposure to harmful substances or environments	Fires and explosions
Total.....	480	163	93	65	82	61	15
Management occupations.....	19	9	7	--	--	--	--
Operations specialties managers.....	6	3	--	--	--	--	--
Financial managers.....	3	--	--	--	--	--	--
Financial managers.....	3	--	--	--	--	--	--
Other management occupations.....	11	5	5	--	--	--	--
Agricultural managers.....	5	3	--	--	--	--	--
Farmers and ranchers.....	4	3	--	--	--	--	--
Food service managers.....	4	--	4	--	--	--	--
Food service managers.....	4	--	4	--	--	--	--
Architecture and engineering occupations.....	3	3	--	--	--	--	--
Drafters, engineering, and mapping technicians.....	3	3	--	--	--	--	--
Community and social services occupations.....	4	--	--	--	--	--	--
Counselors, social workers, and other community and social service specialists.....	4	--	--	--	--	--	--
Education, training, and library occupations.....	3	--	--	--	--	--	--
Healthcare practitioners and technical occupations.....	5	--	--	--	--	--	--
Health diagnosing and treating practitioners.....	5	--	--	--	--	--	--
Protective service occupations.....	24	5	13	--	--	--	--
Fire fighting and prevention workers.....	5	--	--	--	--	--	--
Fire fighters.....	5	--	--	--	--	--	--
Fire fighters.....	5	--	--	--	--	--	--
Law enforcement workers.....	9	--	7	--	--	--	--
Police officers.....	8	--	6	--	--	--	--
Police and sheriff's patrol officers.....	8	--	6	--	--	--	--
Other protective service workers.....	10	3	6	--	--	--	--
Security guards and gaming surveillance officers.....	8	--	6	--	--	--	--
Security guards.....	8	--	6	--	--	--	--
Food preparation and serving related occupations.....	7	--	6	--	--	--	--
Supervisors, food preparation and serving workers.....	3	--	3	--	--	--	--
First-line supervisors/managers, food preparation and serving workers.....	3	--	3	--	--	--	--
First-line supervisors/managers of food preparation and serving workers.....	3	--	3	--	--	--	--
Building and grounds cleaning and maintenance occupations.....	25	5	--	4	9	5	--
Grounds maintenance workers.....	21	3	--	4	9	5	--
Grounds maintenance workers.....	21	3	--	4	9	5	--
Landscaping and groundskeeping workers.....	11	3	--	3	--	4	--
Tree trimmers and pruners.....	10	--	--	--	8	--	--
Sales and related occupations.....	34	6	20	4	3	--	--
Supervisors, sales workers.....	19	--	11	3	--	--	--
First-line supervisors/managers, sales workers.....	19	--	11	3	--	--	--
First-line supervisors/managers of retail sales workers.....	16	--	10	3	--	--	--
First-line supervisors/managers of non-retail sales workers.....	3	--	--	--	--	--	--
Retail sales workers.....	8	--	6	--	--	--	--
Cashiers.....	7	--	6	--	--	--	--
Cashiers.....	7	--	6	--	--	--	--
Sales representatives, wholesale and manufacturing.....	3	--	--	--	--	--	--
Sales representatives, wholesale and manufacturing.....	3	--	--	--	--	--	--
Office and administrative support occupations.....	9	3	5	--	--	--	--
Material recording, scheduling, dispatching, and distributing workers.....	5	3	--	--	--	--	--
Couriers and messengers.....	3	3	--	--	--	--	--
Couriers and messengers.....	3	3	--	--	--	--	--
Farming, fishing, and forestry occupations.....	15	7	--	3	--	3	--
Agricultural workers.....	11	5	--	--	--	3	--
Miscellaneous agricultural workers.....	11	5	--	--	--	3	--
Farmworkers and laborers, crop, nursery, and greenhouse.....	4	--	--	--	--	--	--
Farmworkers, farm and ranch animals.....	4	3	--	--	--	--	--
Construction and extraction occupations.....	133	24	6	21	48	29	5
Supervisors, construction and extraction workers.....	9	3	--	--	--	--	--
First-line supervisors/managers of construction trades and extraction workers.....	9	3	--	--	--	--	--
First-line supervisors/managers of construction trades and extraction workers.....	9	3	--	--	--	--	--
Construction trades workers.....	101	13	3	12	45	26	--
Carpenters.....	7	--	--	--	3	3	--
Carpenters.....	7	--	--	--	3	3	--
Construction laborers.....	41	5	--	9	16	10	--
Construction laborers.....	41	5	--	9	16	10	--
Construction equipment operators.....	6	6	--	--	--	--	--
Operating engineers and other construction equipment operators.....	4	4	--	--	--	--	--
Drywall installers, ceiling tile installers, and tapers.....	4	--	--	--	--	--	--
Drywall and ceiling tile installers.....	4	--	--	--	--	--	--

See footnotes at end of table.

Table 4. Fatal occupational injuries by occupation and event or exposure, Texas, 2009 - Continued

Occupation ¹	Total fatalities (number)	Event or exposure ²					
		Transportation incidents ³	Assaults and violent acts ⁴	Contact with objects and equipment	Falls	Exposure to harmful substances or environments	Fires and explosions
Electricians.....	17	--	--	--	5	9	--
Electricians.....	17	--	--	--	5	9	--
Painters and paperhangers.....	3	--	--	--	--	--	--
Painters, construction and maintenance.....	3	--	--	--	--	--	--
Roofers.....	16	--	--	--	13	--	--
Roofers.....	16	--	--	--	13	--	--
Extraction workers.....	19	7	--	7	--	--	3
Derrick, rotary drill, and service unit operators, oil, gas, and mining.....	3	--	--	3	--	--	--
Roustabouts, oil and gas.....	3	--	--	--	--	--	--
Roustabouts, oil and gas.....	3	--	--	--	--	--	--
Miscellaneous extraction workers.....	10	4	--	4	--	--	--
Extraction workers, all other.....	10	4	--	4	--	--	--
Installation, maintenance, and repair occupations.....	34	7	4	6	5	9	3
Vehicle and mobile equipment mechanics, installers, and repairers.....	18	4	4	5	--	3	--
Automotive technicians and repairers.....	5	--	--	--	--	--	--
Automotive service technicians and mechanics.....	4	--	--	--	--	--	--
Bus and truck mechanics and diesel engine specialists.....	3	--	--	--	--	--	--
Bus and truck mechanics and diesel engine specialists.....	3	--	--	--	--	--	--
Heavy vehicle and mobile equipment service technicians and mechanics.....	3	--	--	--	--	--	--
Mobile heavy equipment mechanics, except engines.....	3	--	--	--	--	--	--
Miscellaneous vehicle and mobile equipment mechanics, installers, and repairers.....	5	--	--	--	--	--	--
Tire repairers and changers.....	5	--	--	--	--	--	--
Other installation, maintenance, and repair occupations.....	15	--	--	--	5	6	--
Heating, air conditioning, and refrigeration mechanics and installers.....	4	--	--	--	--	--	--
Heating, air conditioning, and refrigeration mechanics and installers.....	4	--	--	--	--	--	--
Industrial machinery installation, repair, and maintenance workers.....	4	--	--	--	--	--	--
Maintenance and repair workers, general.....	3	--	--	--	--	--	--
Line installers and repairers.....	3	--	--	--	--	--	--
Miscellaneous installation, maintenance, and repair workers.....	4	--	--	--	--	3	--
Commercial divers.....	3	--	--	--	--	3	--
Production occupations.....	25	--	3	10	4	3	3
Supervisors, production workers.....	4	--	--	--	--	--	--
First-line supervisors/managers of production and operating workers.....	4	--	--	--	--	--	--
First-line supervisors/managers of production and operating workers.....	4	--	--	--	--	--	--
Metal workers and plastic workers.....	15	--	--	8	--	--	--
Machinists.....	4	--	--	4	--	--	--
Machinists.....	4	--	--	4	--	--	--
Welding, soldering, and brazing workers.....	8	--	--	--	--	--	--
Welders, cutters, solderers, and brazers.....	8	--	--	--	--	--	--
Other production occupations.....	4	--	--	--	--	--	--
Miscellaneous production workers.....	4	--	--	--	--	--	--
Transportation and material moving occupations.....	115	82	8	16	3	4	--
Supervisors, transportation and material moving workers.....	3	--	--	3	--	--	--
Motor vehicle operators.....	77	66	5	4	--	--	--
Bus drivers.....	3	3	--	--	--	--	--
Bus drivers, school.....	3	3	--	--	--	--	--
Driver/sales workers and truck drivers.....	72	62	4	4	--	--	--
Truck drivers, heavy and tractor-trailer.....	65	55	4	4	--	--	--
Truck drivers, light or delivery services.....	6	6	--	--	--	--	--
Water transportation workers.....	4	3	--	--	--	--	--
Ship and boat captains and operators.....	3	--	--	--	--	--	--
Captains, mates, and pilots of water vessels.....	3	--	--	--	--	--	--
Material moving workers.....	26	8	3	9	--	--	--
Crane and tower operators.....	4	--	--	3	--	--	--
Crane and tower operators.....	4	--	--	3	--	--	--
Dredge, excavating, and loading machine operators.....	3	--	--	--	--	--	--
Industrial truck and tractor operators.....	3	--	--	--	--	--	--
Industrial truck and tractor operators.....	3	--	--	--	--	--	--
Laborers and material movers, hand.....	14	5	--	3	--	--	--
Cleaners of vehicles and equipment.....	3	--	--	--	--	--	--
Laborers and freight, stock, and material movers, hand.....	11	4	--	3	--	--	--
Military specific occupations ⁵	19	5	13	--	--	--	--
Military enlisted tactical operations and air/weapons specialists and crew members.....	6	--	5	--	--	--	--
Military enlisted tactical operations and air/weapons specialists and crew members.....	6	--	5	--	--	--	--
Military enlisted tactical operations and air/weapons specialists and crew members, all other.....	5	--	5	--	--	--	--

¹ Based on the Standard Occupational Classification System.

² Based on the BLS Occupational Injury and Illness Classification Manual.

³ Includes highway, nonhighway, air, water, rail fatalities, and fatalities resulting from being struck by a vehicle.

⁴ Includes violence by persons, self-inflicted injury, and attacks by animals.

⁵ Military specific occupations include fatalities to persons identified as resident armed forces regardless of individual occupation listed.

NOTE: Totals for major categories may include subcategories not shown separately.

Dashes indicate no data reported or data that do not meet publication criteria. CFOI fatality counts exclude illness-related deaths unless precipitated by an injury event. Data for 2009 are preliminary.

SOURCE: U.S. Bureau of Labor Statistics, in cooperation with State and Federal agencies, Census of Fatal Occupational Injuries.